

UView Ultraviolet Converter for C-mount Cameras

The UView accessory converts ultraviolet radiation into a visible green beam profile that is reimaged onto a CCD style C-mount camera. The UView operates over the ultraviolet region of 190-390nm. It has a reimaging magnification factor of ~0.5x and a field of view (FOV) of ~15x20mm with an SP620 style camera. The FOV will vary with camera format. Camera and software sold separately.



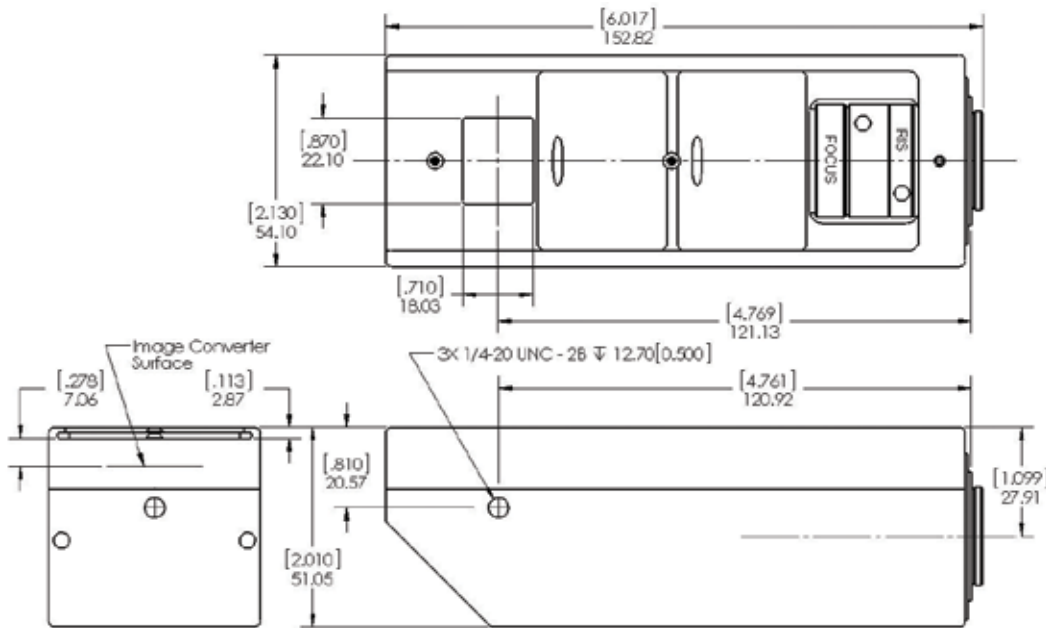
UView



UView- top view



UView- with camera (sold separately)



UView Image Converter specifications

Specifications

Beam reduction	~ 0.50X nominal image reduction
Scale factor	~ 2.0 nominal scale factor for BeamGage, see label
Spectral range	190 to 390nm
Minimum signal	~ 1 uJ/cm ²
Camera saturation ¹	~ 30mJ/cm ² at 193nm, ~ 15mJ/cm ² at 248nm Varies with wavelength and camera type
Clear aperture	18mm X 22mm
Effective aperture	10.56mm x 14.08mm w/SP620, varies with camera format
Damage threshold	5W/cm ² / 100mJ/cm ²
Mounting	3 1/4-20 threaded mounting points, see figure 11
Dimensions	see figure above
Adaptable beam analyzer camera systems	The UView can be used with the following cameras employed by BeamGage (This product will work with any C&CS -mount camera but the FOV will vary based on imager format): SP503, SP620, GRAS20, GEVICAM

1. The UV converter glass will damage before it becomes saturated

Ordering Information

Item	Description	P/N
UView	UView, Accessory for C-mount Cameras	SP90322