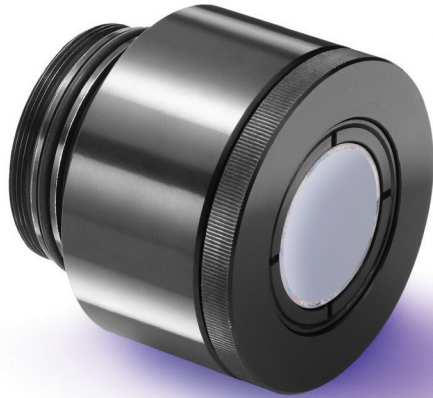
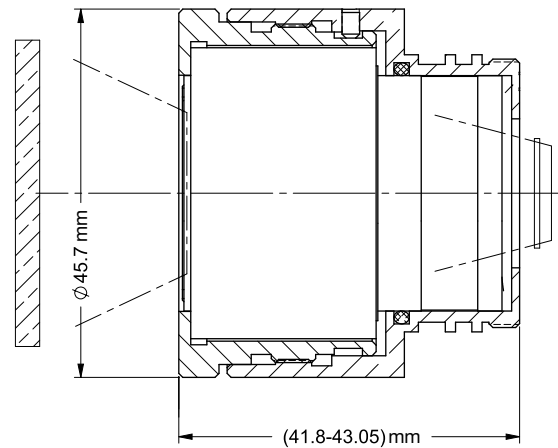


SuplR 15.6mm f/1.0, Athermalized Manual Focus 680054

TYPICAL ICD*



HD
FORMAT



HFOV	320x240	384x288	640x480	1024x768
17μ	19.8°	23.9°	40.0°	
12μ	14.0°	16.8°	28.1°	45.4°

Property		Value			
Optical					
Focal Length		15.6mm			
F#		1.0			
Average transmission (8-12μm)		87% (HC)			
Back Focal Length		18mm in air			
Mechanical					
Focus Mechanism		Manually adjustable			
Depth of Field		5m to infinity			
Focus Range		0.75m to infinity			
Weight		see configurations table below			
Max. Dimensions		see configurations table below			
Environmental					
Operation Temperature		-40°C to +85°C			
Storage Temperature		-45°C to +100°C			
Sealing		IP 67 front element only, focus mechanics unsealed			
Configurations	Weight (gr)	Dimensions	BWD**	Thread	Coating
680054-001	125	Ø45.7mm x (41.8-43.05)mm	3.9	1.3125-32 UNS	HC, MWIR block filter
680054-003	123	Ø45.7mm x (35.9-37.1)mm	9.7	M34x0.5	

* The ICD drawing provided here is primarily a representation and may not accurately reflect the product's actual dimensions and specifications. For precise integration specifications contact your local sales representative.

** The BWD value is calculated for a unique detector setup with varying sealing windows in terms of thickness and material. For more details, contact your local sales representative.