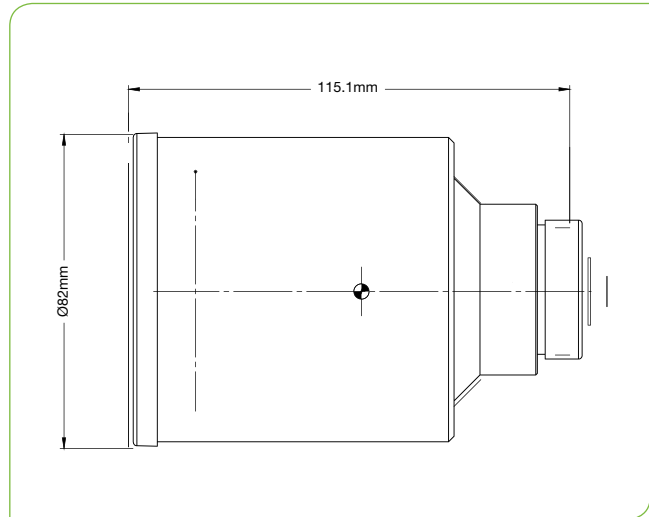
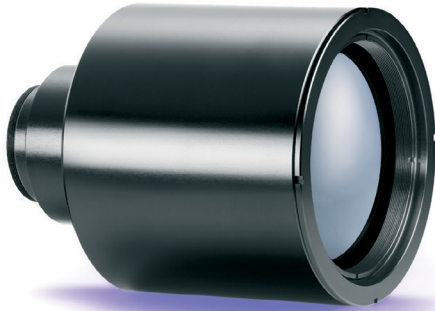


SuplR 100mm f/1.6, Fixed Athermalized 680026

TYPICAL ICD*

HD
FORMAT



LWIR | 1-FOV

HFOV	320x240	384x288	640x480	1024x768	1280x1024
17μ	3.1°	3.7°	6.2°	9.8°	
12μ	2.2°	2.6°	4.4°	7.0°	8.7°

Property			Value		
Optical					
Focal Length			100mm		
F#			1.6		
Average transmission (8-12μm)			88% (HC)		
Back Focal Length			21.33mm in air		
Mechanical					
Focus Mechanism			Fixed Focus		
Depth of Field			400m to infinity		
Focus Range			3m to infinity		
Weight			450gr		
Max. Dimensions			Ø82mm x 115.1mm		
Environmental					
Operation Temperature			-10°C to +80°C		
Storage Temperature			-50°C to +85°C		
Sealing			IP 67 front element only		
Configurations	Weight (gr)	Dimensions	BWD**	Thread	Coating
680026-006	450	Ø82mm x 115.1mm	17.6	M34x0.5	HC
680026-007					HD

* The ICD drawing provided here is primarily a representation and may not accurately reflect the product's actual dimensions and specifications. For precise integration specifications contact your local sales representative.

** The BWD value is calculated for a unique detector setup with varying sealing windows in terms of thickness and material. For more details, contact your local sales representative.