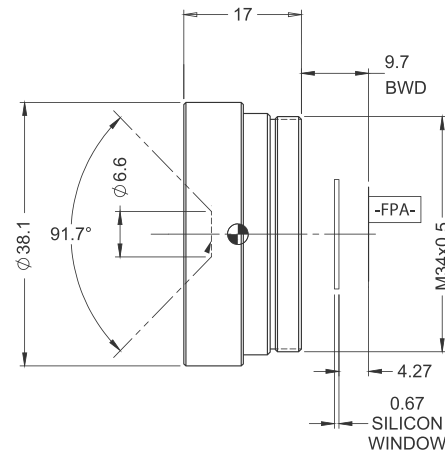


# SupIR 9.0mm f/1.4, Fixed Athermalized 680258

TYPICAL ICD\*



**HD  
FORMAT**



HFOV	320x240	384x288	640x480	1024x768
17μ	34.6°	41.7°	71.2°	
12μ	24.3°	29.2°	49.3°	81.5°

LWIR | 1-FOV

Property		Value			
Optical					
Focal Length		9mm			
F#		1.4			
Average transmission (8-12μm)		94% (HD) / 92% (HC)			
Back Focal Length		12.37mm in air			
Mechanical					
Focus Mechanism		Fixed			
Depth of Field		5m to infinity			
Focus Range		0.5m to infinity			
Weight		35gr			
Max. Dimensions		Ø38.1mm x 17mm			
Environmental					
Operation Temperature		-40°C to +80°C			
Storage Temperature		-50°C to +85°C			
Sealing		IP 67 front element only			
Configurations	Weight (gr)	Dimensions	BWD**	Thread	Coating
680258-003	35	Ø38.1mm x 17mm	9.7	M34x0.5	HD
680258-004					HC

\* The ICD drawing provided here is primarily a representation and may not accurately reflect the product's actual dimensions and specifications. For precise integration specifications contact your local sales representative.

\*\* The BWD value is calculated for a unique detector setup with varying sealing windows in terms of thickness and material. For more details, contact your local sales representative.