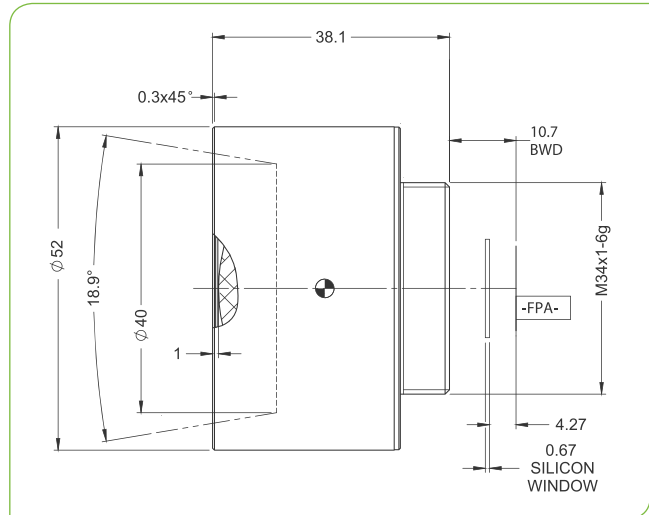
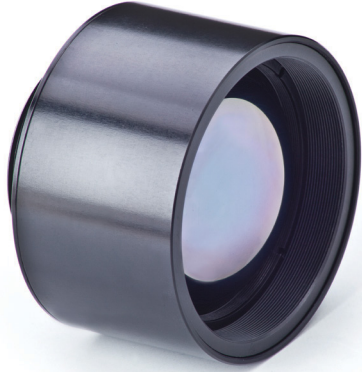


# SupIR 40mm f/1.0, Fixed Athermalized 680277

TYPICAL ICD\*



HFOV	320x240	384x288	640x480
17μ	7.8°	9.3°	15.3°
12μ	5.5°	6.6°	10.9°

LWIR | 1-FOV

Property		Value			
Optical					
Focal Length		40mm			
F#		1.0			
Average transmission (8-12μm)		94% (HD) / 87% (HC)			
Back Focal Length		17.8mm in air			
Mechanical					
Focus Mechanism		Fixed			
Depth of Field		100m to infinity			
Focus Range		3m to infinity			
Weight		121gr			
Max. Dimensions		Ø52mm x 38.1mm			
Environmental					
Operation Temperature		-40°C to +80°C			
Storage Temperature		-50°C to +85°C			
Sealing		IP 67 front element only			
Configurations	Weight (gr)	Dimensions	BWD**	Thread	Coating
680277-001	121	Ø52mm x 38.1mm	10.7	M34x1	HD
680277-002					HC
680277-003				M34x0.5	HC

\* The ICD drawing provided here is primarily a representation and may not accurately reflect the product's actual dimensions and specifications. For precise integration specifications contact your local sales representative.

\*\* The BWD value is calculated for a unique detector setup with varying sealing windows in terms of thickness and material. For more details, contact your local sales representative.