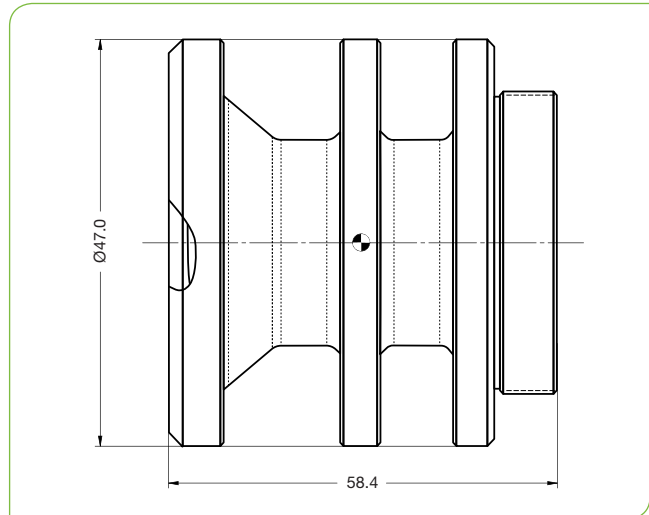


SupIR 6.5mm f/1.0, Fixed Athermalized 680423*

TYPICAL ICD*



HD
FORMAT



LWIR | 1-FOV

HFOV	320x240	384x288	640x480	1024x768
17μ	45.6°	53.8°	82°	
12μ	32.9°	39.1°	61.8°	90°
10μ	27.6°	32.9°	52.9°	78.2°

Property			Value		
Optical					
Focal Length			6.5mm		
F#			1.0		
Average transmission (8-12μm)			90% (HD)		
Back Focal Length			12.89mm in air		
Mechanical					
Focus Mechanism			Fixed		
Depth of Field			1.6m to infinity		
Focus Range			0.8m to infinity		
Weight			132gr		
Max. Dimensions			Ø47.0mm x 58.4mm		
Environmental					
Operation Temperature			-40°C to +80°C		
Storage Temperature			-40°C to +80°C		
Sealing			IP 67 front element only		
Configurations	Weight (gr)	Dimensions	BWD**	Thread	Coating
680423-002	132	Ø47.0mm x 58.4mm	9.3	M36x0.5	HD

* Requires export license

* The ICD drawing provided here is primarily a representation and may not accurately reflect the product's actual dimensions and specifications. For precise integration specifications contact your local sales representative.

** The BWD value is calculated for a unique detector setup with varying sealing windows in terms of thickness and material. For more details, contact your local sales representative.