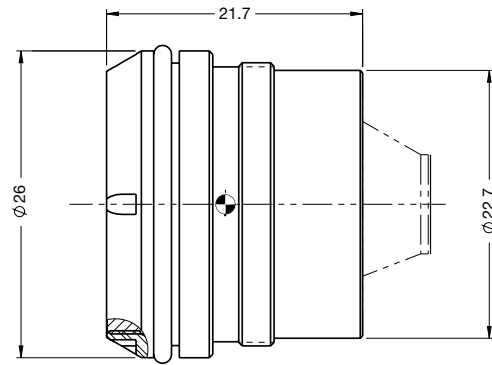


SupIR 8.7mm f/1.0, Fixed Athermalized 680310

TYPICAL ICD*



HD
FORMAT



LWIR | 1-FOV

HFOV	320x240	384x288	640x480	1024x768
17μ	35.3°	42.4°	71.8°	
12μ	24.9°	29.9°	50.1°	
10μ	20.8°	24.9°	41.6°	67.4°

Property		Value			
Optical					
Focal Length		8.7mm			
F#		1.0			
Average transmission (8-12μm)		90% (HD) / 88% (HC)			
Back Focal Length		7.39mm in air			
Mechanical					
Focus Mechanism		Fixed			
Depth of Field		6m to infinity			
Focus Range		0.2m to infinity			
Weight		25.4gr			
Max. Dimensions		Ø26.0mm x 21.7mm			
Environmental					
Operation Temperature		-40°C to +80°C			
Storage Temperature		-54°C to +85°C			
Sealing		IP 67 front element only			
Configurations	Weight (gr)	Dimensions	BWD**	Thread	Coating
680310-005	25.4	Ø26.0mm x 21.7mm	5.76	M24x0.5	HD
680310-006					HC

* The ICD drawing provided here is primarily a representation and may not accurately reflect the product's actual dimensions and specifications. For precise integration specifications contact your local sales representative.

** The BWD value is calculated for a unique detector setup with varying sealing windows in terms of thickness and material. For more details, contact your local sales representative.