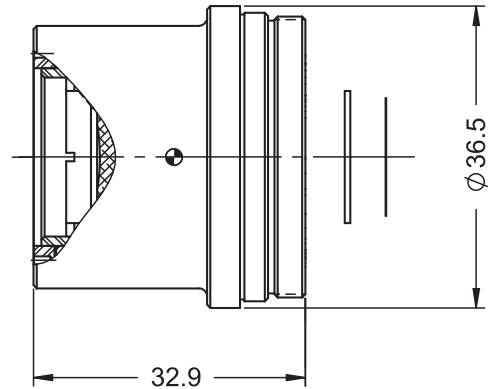


SuplR 9.8mm f/1.25, Fixed Athermalized 680138

TYPICAL ICD*



HD
FORMAT



HFOV	320x240	384x288	640x480	1024x768
17μ	31.6°	38.0°	64.9°	
12μ	22.2°	26.7°	44.9°	74.3°

Property		Value			
Optical					
Focal Length		9.8mm			
F#		1.25			
Average transmission (8-12μm)		96% (HD) / 88% (HC)			
Back Focal Length		13.94mm in air			
Mechanical					
Focus Mechanism		Fixed			
Depth of Field		5m to infinity			
Focus Range		0.3m to infinity			
Weight		70gr			
Max. Dimensions		Ø36.5mm x 32.9mm			
Environmental					
Operation Temperature		-30°C to +70°C			
Storage Temperature		-51°C to +95°C			
Sealing		IP 67 for 680138-002			
Configurations	Weight (gr)	Dimensions	BWD**	Thread	Coating
680138-002	70	Ø36.5mm x 32.9mm	9.7	M34x0.5	HC
680138-003					HD, sealed

* The ICD drawing provided here is primarily a representation and may not accurately reflect the product's actual dimensions and specifications. For precise integration specifications contact your local sales representative.

** The BWD value is calculated for a unique detector setup with varying sealing windows in terms of thickness and material. For more details, contact your local sales representative.