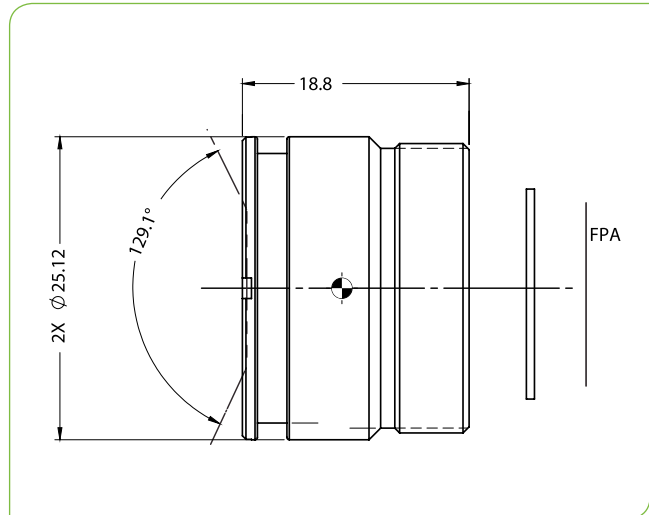


SupIR 7.5mm f/1.2, Fixed Athermalized 680331

TYPICAL ICD*



**HD
FORMAT**



HFOV	320x240	384x288	640x480	1024x768
17μ	42.5°	51.4°	90.9°	
12μ	29.7°	35.8°	61.1°	106.5°

Property			Value		
Optical					
Focal Length			7.5mm		
F#			1.2		
Average transmission (8-12μm)			93% (HD) / 87% (HC)		
Back Focal Length			12.8mm in air		
Mechanical					
Focus Mechanism			Fixed		
Depth of Field			2m to infinity		
Focus Range			0.4m to infinity		
Weight			see configurations table below		
Max. Dimensions			see configurations table below		
Environmental					
Operation Temperature			-40°C to +80°C		
Storage Temperature			-50°C to +85°C		
Sealing			IP 67 front element only		
Configurations	Weight (gr)	Dimensions	BWD**	Thread	Coating
680331-001	24.5	Ø25.12mm x 18.8mm	9.7	M24x0.5	HD
680331-002					LRHC***
680331-007	43.9	Ø34.9mm x 18.8mm		M34x0.5	HC
680331-005					HD
680331-006					LRHC***

* The ICD drawing provided here is primarily a representation and may not accurately reflect the product's actual dimensions and specifications. For precise integration specifications contact your local sales representative.

** The BWD value is calculated for a unique detector setup with varying sealing windows in terms of thickness and material. For more details, contact your local sales representative.

*** For detailed LRHC coating specifications see page 13