

SupIR 30-600mm f/4.0*, Motorized Continuous Zoom 680384 / 680385



HD
FORMAT

WFOV

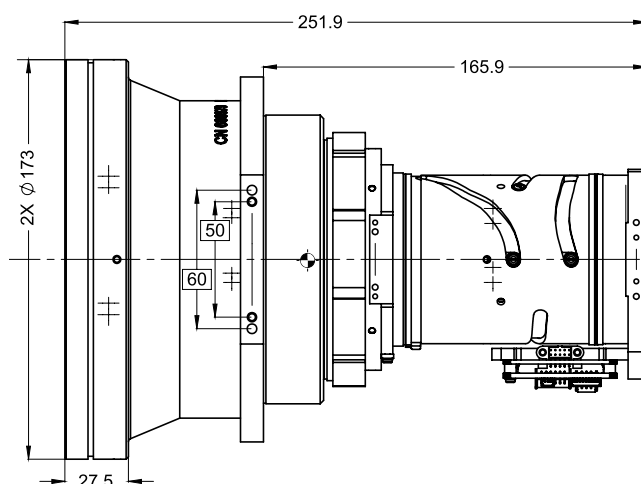
HFOV	640x512	1280x720	1280x1024
	30mm	46mm	60mm
15μ	17.2°		
10μ		14.6°	11.4°

NFOV (600mm)

HFOV	640x512	1280x720	1280x1024
15μ	0.9°		
10μ		1.2°	1.2°

Property		Value	
Optical		WFOV	NFOV
Focal Length		30mm	600mm
F/#		4.0	
Average transmission (3.4-5μm)		92% (HD)	
680384	Based on Zoom Lens:	15-300mm f/4 680084	
	Cold stop to FPA Distance	19.4mm	
	Cold Stop CA	Ø4.85mm	
	BFL	23.3mm in air	
680385	Based on Zoom Lens:	15-300mm f/4 680204	
	Cold stop to FPA Distance	20.47mm	
	Cold Stop CA	Ø5.1	
	BFL	26.2mm in air	
Minimum Focus Range		5m	200m
Nuc (by defocus)		By defocus (blur to 3mm diameter)	
Mechanical			
Focus Mechanism		Motorized	
Focus Time (minimum range to ∞)		≤1 sec.	
Zoom Mechanism		Motorized	
Zoom Time (NFOV to WFOV)		≤5 sec. at -32°C; ≤4 sec. at T≥20°C (at max speed)	
Through-zoom boresight		Within a radius of 0.22 mm at the focal plane along the full zoom range	
Mechanical			
Weight		3.1kg	
Max. Dimensions		Ø173mm x 251.9mm	

* For 10μm SXGA detectors, the EFL is 60-600mm



Property			Value		
Electrical					
Lens Control			Designated lens controller		
Supply Voltage			12V		
Current Consumption			0.5A average, 1.0A peak		
Communication Protocol			RS422		
Environmental					
Operation Temperature			-32°C to +75°C		
Storage Temperature			-54°C to +85°C		
Sealing			IP 67 front element only		
Configurations	Description	FPA	Pixel Pitch	CSH	Coating
680384-001	30-600mm	640x512	15μ	19.4mm	HD
680384-002					LRHC**
680384-003					HD
680384-004	60-600mm	1280x1024	10μ		LRHC**
680384-005					HD Hydrophobic
680384-006					HC Hydrophobic
680385-001	30-600mm	640x512	15μ	20.5mm	HD
680385-002					LRHC**
680385-003					HD
680385-004	46-600mm	1280x720	10μ		LRHC**
680385-005					HD Hydrophobic
680385-006					HC Hydrophobic

* NOTE: The ICD drawing provided here is primarily a representation and may not accurately reflect the product's actual dimensions and specifications. For precise integration specifications contact your local sales representative.

** For detailed LRHC coating specifications see page 13