

SupIR 35-690mm f/4.0*, Motorized Continuous Zoom 680294 / 680295



HD
FORMAT

WFOV

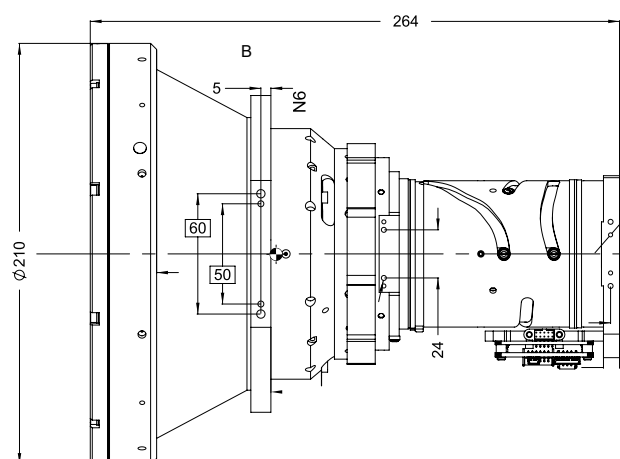
HFOV	640x512	1280x720	1280x1024
	35mm	46mm	60mm
15μ	15.2°		
10μ		14.8°	11.5°

NFOV (690mm)

HFOV	640x512	1280x720	1280x1024
15μ	0.8°		
10μ		1.0°	1.0°

Property		Value	
Optical		WFOV	NFOV
Focal Length		35mm	690mm
F/#		4.0	
Average transmission (3.4-5μm)		85% (HD) / 82% (HC)	
680294	Based on Zoom Lens:	15-300mm f/4 680084-003	
	Cold stop to FPA Distance	19.4mm	
	Cold Stop CA	Ø4.85mm	
	BFL	23.3mm (assuming 1.5mm Ge window & filter)	
680295	Based on Zoom Lens:	15-300mm f/4 680204-001 (for Scorpio detector)	
	Cold stop to FPA Distance	20.47mm	
	Cold Stop CA	Ø5.1	
	BFL	26.6mm (assuming 1mm Si window & 0.3mm Ge cold filter)	
Minimum Focus Range		5m	200m
Nuc (by defocus)		Yes	
Mechanical			
Focus Mechanism		Motorized	
Focus Time (minimum range to ∞)		≤1 sec.	
Zoom Mechanism		Motorized	
Zoom Time (NFOV to WFOV)		≤5 sec. at -32°C; ≤4 sec. at T≥20°C (at max speed)	
Through-zoom boresight		Within a radius of 0.35 mm at the focal plane along the full zoom range	
NFOV boresight retention		Within a radius of 0.35mm at the focal plane	
Through-zoom parfocality		Focused image	
Weight		4kg	
Max. Dimensions		Ø210mm x 264mm	

* For 10μm SXGA detectors, the EFL is 60-690mm



Property			Value		
Electrical					
Lens Control			Designated lens controller		
Supply Voltage			12V		
Current Consumption			0.5A average, 1.0A peak		
Communication Protocol			RS422		
Environmental					
Operation Temperature			-32°C to +75°C		
Storage Temperature			-54°C to +85°C		
Sealing			IP 67 front element only		
Configurations	Description	FPA	Pixel Pitch	CSH	Coating
680294-001	35-690mm	640x512	15μ	19.4mm	HC
680294-002					LRHC**
680294-003					HC
680294-004	60-690mm	1280x1024	10μ	19.4mm	LRHC**
680294-006					HD Hydrophobic
680294-007					HC Hydrophobic
680295-001	35-690mm	640x512	15μ	20.5mm	HC
680295-002					LRHC**
680295-003					LRHC**
680295-005	46-690mm	1280x720	10μ	20.5mm	HD Hydrophobic
680295-006					HC Hydrophobic

* NOTE: The ICD drawing provided here is primarily a representation and may not accurately reflect the product's actual dimensions and specifications. For precise integration specifications contact your local sales representative.

** For detailed LRHC coating specifications see page 13