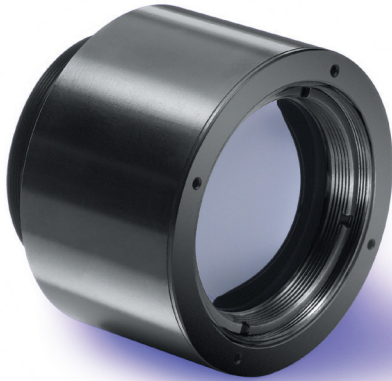
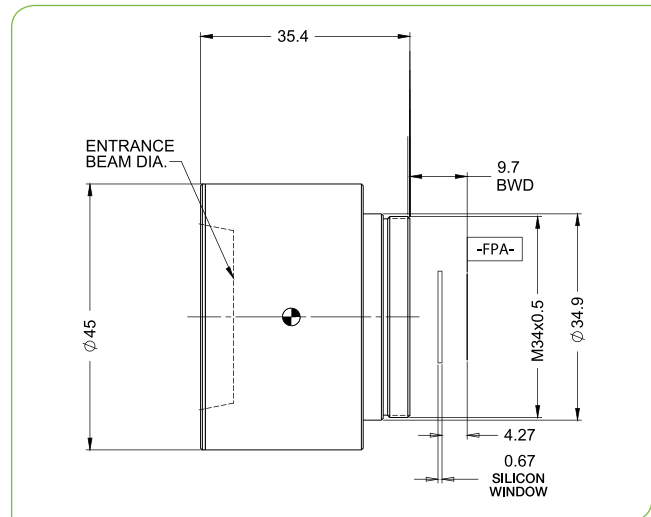


SuplR 35mm f/1.2, Fixed Athermalized 680111

TYPICAL ICD*



HD
FORMAT



HFOV	320x240	384x288	640x480	1024x768
17μ	8.9°	10.6°	17.6°	
12μ	6.3°	7.5°	12.5°	19.7°

Property		Value			
Optical					
Focal Length		35mm			
F#		1.2			
Average transmission (8-12μm)		93% (HD)			
Back Focal Length		22.62mm in air			
Mechanical					
Focus Mechanism		Fixed			
Depth of Field		50m to infinity			
Focus Range		1m to infinity			
Weight		102gr			
Max. Dimensions		Ø45mm x 35.4mm			
Environmental					
Operation Temperature		-40°C to +80°C			
Storage Temperature		-55°C to +85°C			
Sealing		IP 67 front element only			
Configurations	Weight (gr)	Dimensions	BWD**	Thread	Coating
680111-005	102	Ø45mm x 35.4mm	9.7	M34x0.5	HD
680111-006					HC

* The ICD drawing provided here is primarily a representation and may not accurately reflect the product's actual dimensions and specifications. For precise integration specifications contact your local sales representative.

** The BWD value is calculated for a unique detector setup with varying sealing windows in terms of thickness and material. For more details, contact your local sales representative.