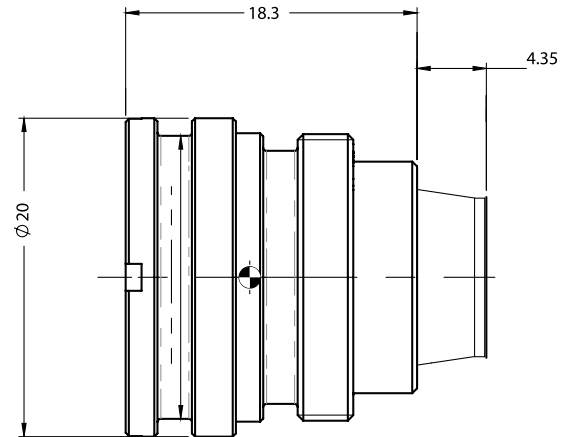


# SupIR 9.2mm f/1.0, Fixed Athermalized 680407

TYPICAL ICD\*



HFOV	320x240	384x288	640x480	672x544
17μ	34.6°	41.9°		
12μ	24.2°	29.1°	50.0°	52.8°
10μ	20.1°	24.2°	41.0°	43.2°

Property			Value		
Optical					
Focal Length			9.2mm		
F#			1.0		
Average transmission (8-12μm)			92% (HD) / 84% (HC)		
Back Focal Length			6.85mm in air		
Mechanical					
Focus Mechanism			Fixed		
Depth of Field			4m to infinity		
Focus Range			0.5m to infinity		
Weight			see configurations table below		
Max. Dimensions			see configurations table below		
Environmental					
Operation Temperature			-40°C to +80°C		
Storage Temperature			-55°C to +85°C		
Sealing			IP 67 front element only		
Configurations	Weight (gr)	Dimensions	BWD**	Thread	Coating
680407-001	12.8	Ø20.0mm x 18.3mm	4.35	M18x0.5	HD
680407-002					HC
680407-003	13.4	Ø19.95mm x 14.4mm	6.93	M19x0.5	HD
680407-004					HC

\* The ICD drawing provided here is primarily a representation and may not accurately reflect the product's actual dimensions and specifications. For precise integration specifications contact your local sales representative.

\*\* The BWD value is calculated for a unique detector setup with varying sealing windows in terms of thickness and material. For more details, contact your local sales representative.