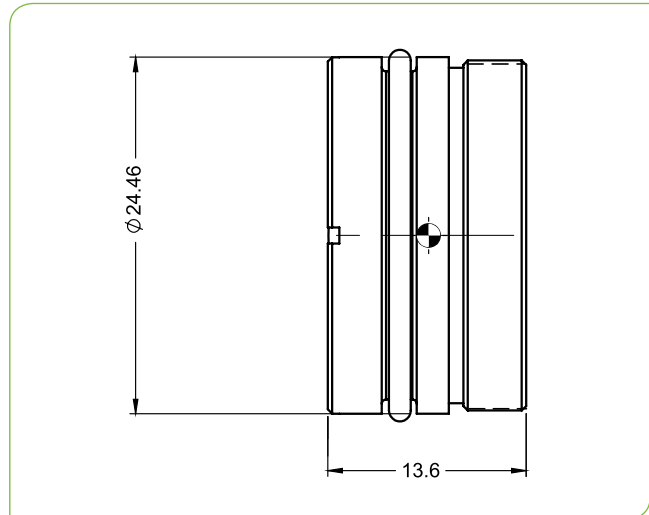


SuplR 19.8mm f/1.2, Fixed Athermalized 680312

TYPICAL ICD*



HFOV	320x240	384x288	640x480
17μ	15.5°	18.6°	
12μ	11.0°	13.2°	21.7°
10μ			18.2°

LWIR | 1-FOV

Property		Value			
Optical					
Focal Length		19.8mm			
F#		1.2			
Average transmission (8-12μm)		91% (HD) / 90% (HC)			
Back Focal Length		13.45mm in air			
Mechanical					
Focus Mechanism		Fixed			
Depth of Field		20m to infinity			
Focus Range		0.5m to infinity			
Weight		14.9gr			
Max. Dimensions		Ø24.46mm x 13.6mm			
Environmental					
Operation Temperature		-40°C to +80°C			
Storage Temperature		-54°C to +85°C			
Sealing		IP 67 front element only			
Configurations	Weight (gr)	Dimensions	BWD**	Thread	Coating
680312-001	14.9	Ø24.46mm x 13.6mm	13.9	M24x0.5	HD
680312-002					HC

* The ICD drawing provided here is primarily a representation and may not accurately reflect the product's actual dimensions and specifications. For precise integration specifications contact your local sales representative.

** The BWD value is calculated for a unique detector setup with varying sealing windows in terms of thickness and material. For more details, contact your local sales representative.