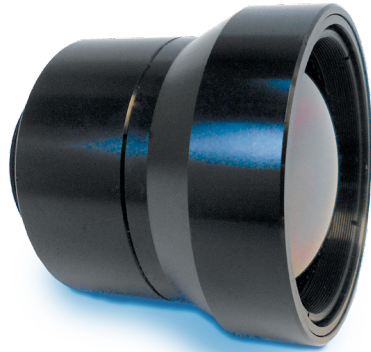
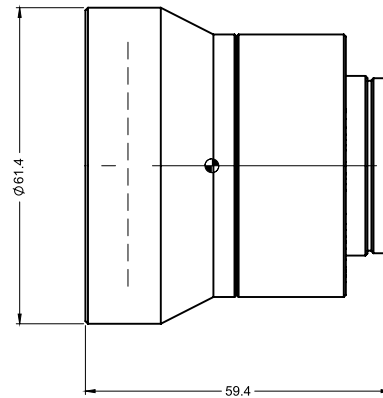


# SupIR 60mm f/1.25, Fixed Athermalized 680260

TYPICAL ICD\*



**HD**  
FORMAT



HFOV	320x240	384x288	640x480	1024x768
17μ	5.2°	6.2°	10.2°	
12μ	3.7°	4.4°	7.3°	11.5°

Property		Value			
Optical					
Focal Length		60mm			
F#		1.25			
Average transmission (8-12μm)		88% (HC)			
Back Focal Length		13.66mm in air			
Mechanical					
Focus Mechanism		Fixed			
Depth of Field		160m to infinity			
Focus Range		2m to infinity			
Weight		227gr			
Max. Dimensions		Ø61.4mm x 59.4mm			
Environmental					
Operation Temperature		-40°C to +80°C			
Storage Temperature		-54°C to +85°C			
Sealing		IP 67 front element only			
Configurations	Weight (gr)	Dimensions	BWD**	Thread	Coating
680260-001	227	Ø61.4mm x 59.4mm	9.56	M34x0.5	HC

\* The ICD drawing provided here is primarily a representation and may not accurately reflect the product's actual dimensions and specifications. For precise integration specifications contact your local sales representative.

\*\* The BWD value is calculated for a unique detector setup with varying sealing windows in terms of thickness and material. For more details, contact your local sales representative.