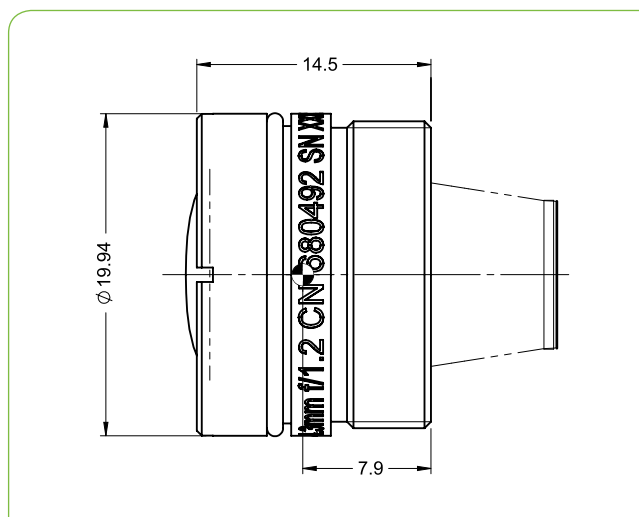


SuplR 4.3mm f/1.2, Fixed Athermalized 680492

TYPICAL ICD*



HFOV	320x240	384x288	640x512	672x544
17μ	75°	92°		
12μ	51.8°	62.8°	111.9°	
10μ	42.9°	51.8°	90°	95.2°

Property		Value			
Optical					
Focal Length		4.3mm			
F#		1.2			
Average transmission (8-12μm)		83% (HC)			
Back Focal Length		7.74mm in air			
Mechanical					
Focus Mechanism		Fixed			
Depth of Field		1m to infinity			
Focus Range		0.5m to infinity			
Weight		12.5gr			
Max. Dimensions		Ø19.94mm x 14.5mm			
Environmental					
Operation Temperature		-40°C to +80°C			
Storage Temperature		-55°C to +85°C			
Sealing		IP 67 front element only			
Configurations	Weight (gr)	Dimensions	BWD**	Thread	Coating
680492-001	12.5	Ø19.94mm x 14.5mm	7.8	M19x0.5	HC, MWIR block filter
680492-002					HC
680492-003					HD

* The ICD drawing provided here is primarily a representation and may not accurately reflect the product's actual dimensions and specifications. For precise integration specifications contact your local sales representative.

** The BWD value is calculated for a unique detector setup with varying sealing windows in terms of thickness and material. For more details, contact your local sales representative.