

# SupIR 80-1200mm f/5.5, Motorized Continuous Zoom 680478



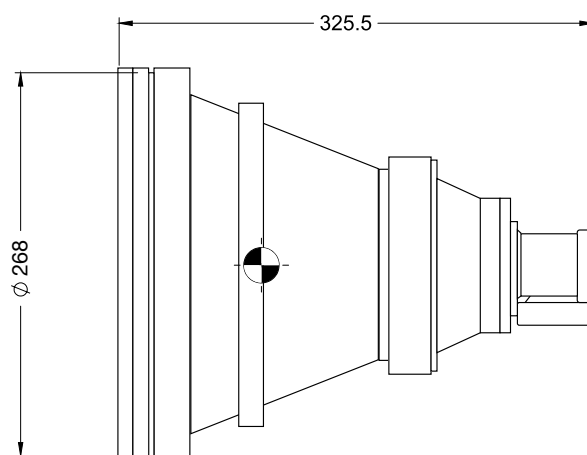
## WFOV (80mm)

HFOV	640x512
15μ	7.1°

## NFOV (1200mm)

HFOV	640x512
15μ	0.5°

Property	Value	
Optical	WFOV	NFOV
Focal Length	80mm	1200mm
F#	5.5	
Average transmission (3.4-5.0μm)	≥80% (LRHC) / ≥85% (HD)	
Cold stop to FPA Distance	19.7mm	
Cold Stop CA	Ø3.52mm	
Back Focal Length	23.52mm in air	
Minimum Focusing Range	5m	220m
Nuc (by defocus)	Yes	
Mechanical		
Focus Mechanism	Motorized	
Focus Time (minimum range to ∞)	≤8 sec.	
Zoom mechanism	Motorized	
Zoom Time (NFOV to WFOV)	≤5 sec	
Max. Dimensions	Ø268mm x 325.5mm	
Weight	7.4kg	



Property	Value
<b>Electrical</b>	
Lens Control	Designated lens controller
Drive Voltage	12V
Current Consumption	0.5A average, 1.0A peak at T = -32°C; 0.2A average, 1.0A peak at T ≥ 20°C
Communication Protocol	RS458, RS422
<b>Environmental</b>	
Operation Temperature	-32°C to +70°C
Storage Temperature	-54°C to +85°C
Sealing	IP67 front element only
<b>Configurations</b>	
680478-001	HD
680478-002	LRHC**

\* NOTE: The ICD drawing provided here is primarily a representation and may not accurately reflect the product's actual dimensions and specifications. For precise integration specifications contact your local sales representative.

\*\* For detailed LRHC coating specifications see page 13