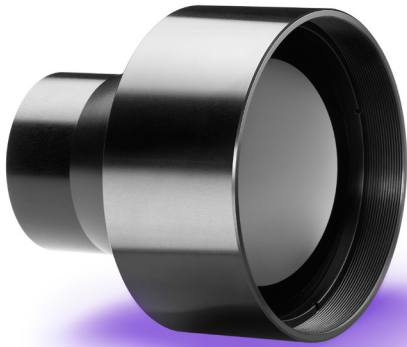
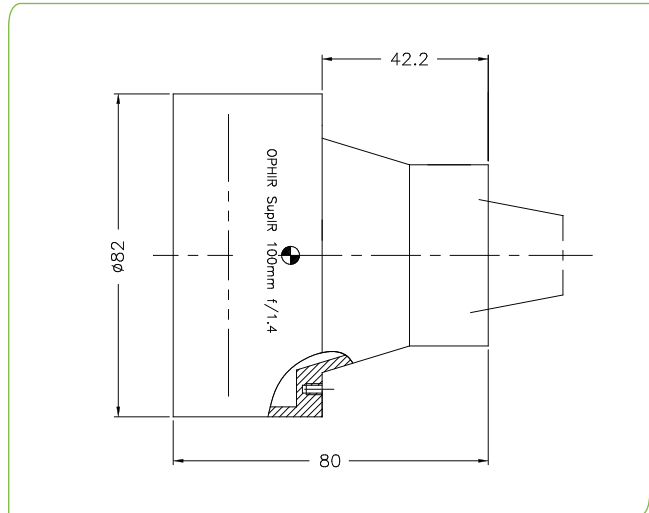


SupIR 100mm f/1.4, Fixed Focus 65148

TYPICAL ICD*



HD
FORMAT



LWIR | 1-FOV

HFOV	320x240	384x288	640x480	1024x768	1280x1024
17μ	3.1°	3.7°	6.2°	9.8°	
12μ	2.2°	2.6°	4.4°	7.0°	8.7°

Property		Value			
Optical					
Focal Length		100mm			
F#		1.4			
Average transmission (8-12μm)		88% (HC)			
Back Focal Length		30.25mm in air			
Mechanical					
Focus Mechanism		Fixed focus			
Depth of Field		470m to infinity			
Focus Range		5.5m to infinity			
Weight		260gr			
Max. Dimensions		Ø82mm x 80mm			
Environmental					
Operation Temperature		-30°C to +85°C			
Storage Temperature		-40°C to +85°C			
Sealing		IP 67 front element only			
Configurations	Weight (gr)	Dimensions	BWD**	Thread	Coating
65148-02	260	Ø82mm x 80mm	18.95	4x #4-40 UNC	HC

* The ICD drawing provided here is primarily a representation and may not accurately reflect the product's actual dimensions and specifications. For precise integration specifications contact your local sales representative.

** The BWD value is calculated for a unique detector setup with varying sealing windows in terms of thickness and material. For more details, contact your local sales representative.