

SupIR 30-600mm f/4.0*, Motorized Continuous Zoom 680384 / 680385

MWIR | ZOOM



HD
FORMAT

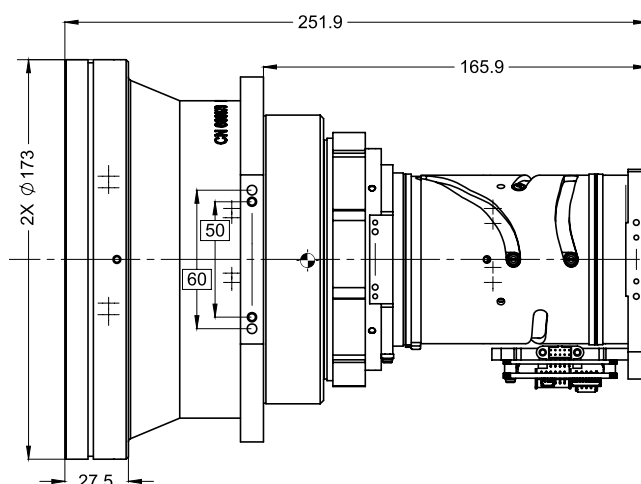
WFOV (30mm)		
HFOV	640x512	
15μ	17.2°	
10μ	-	

WFOV (60mm)		
HFOV	1280X1024	
10μ	11.4°	

NFOV (600mm)			
HFOV	640x512	1280X1024	
15μ	0.9°		
10μ	-	1.2°	

Property		Value	
Optical		WFOV	NFOV
Focal Length		30mm	600mm
F/#		4.0	
Average transmission (3.4-5μm)		92% (HD)	
680384	Based on Zoom Lens:	15-300mm f/4 680084	
	Cold stop to FPA Distance	19.4mm	
	Cold Stop CA	Ø4.85mm	
	BFL	23.3mm in air	
680385	Based on Zoom Lens:	15-300mm f/4 680204	
	Cold stop to FPA Distance	20.47mm	
	Cold Stop CA	Ø5.1	
	BFL	26.2mm in air	
Minimum Focus Range		5m	200m
Nuc (by defocus)		By defocus (blur to 3mm diameter)	
Mechanical			
Focus Mechanism		Motorized	
Focus Time (minimum range to ∞)		≤1 sec.	
Zoom Mechanism		Motorized	
Zoom Time (NFOV to WFOV)		≤7 sec. at -32°C; ≤5 sec. at T≥ 0°C	
Through-zoom boresight		Within a radius of 0.22 mm at the focal plane along the full zoom range	
Mechanical			
Weight		3.1kg	
Max. Dimensions		Ø173mm x 251.9mm	

* For 10μm SXGA detectors, the EFL is 60-600mm



Property			Value		
Electrical					
Lens Control			Designated lens controller		
Supply Voltage			12V		
Current Consumption			0.5A average, 1.0A peak		
Communication Protocol			RS422		
Environmental					
Operation Temperature			-32°C to +75°C		
Storage Temperature			-54°C to +85°C		
Sealing			IP 67 front element only		
Configurations	Description	FPA	Pixel Pitch	CSH	Coating
680384-001	30-600mm	640x512	15μ	19.4mm	High Durability
680384-002					Low Reflection Hard Carbon**
680384-003					High Durability
680384-004	60-600mm	1280x1024	10μ	19.4mm	Low Reflection Hard Carbon**
680384-005					High Durability Hydrophobic
680384-006					Hard Carbon Hydrophobic
680385-001	30-600mm	640x512	15μ	20.5mm	High Durability
680385-002					Low Reflection Hard Carbon**
680385-003					High Durability
680385-004	60-600mm	1280x1024	10μ	20.5mm	Low Reflection Hard Carbon**
680385-005					High Durability Hydrophobic
680385-006					Hard Carbon Hydrophobic

* NOTE: The ICD drawing provided here is primarily a representation and may not accurately reflect the product's actual dimensions and specifications. For precise integration specifications contact your local sales representative.

** For detailed LRHC coating specifications see page 13