

# SupIR 19-200mm f/4.0, Motorized Continuous Zoom 680209\*

MWIR | ZOOM



**HD**  
FORMAT

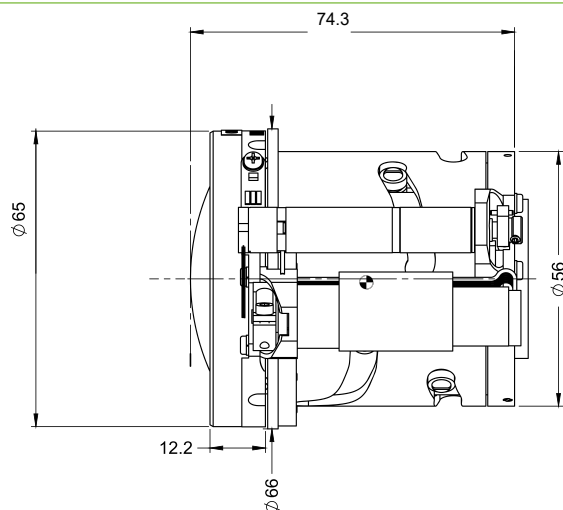
WFOV (19mm)		
HFOV	640x512	
15μ	29.7°	
10μ	19.6°	

WFOV (40mm)		
HFOV	1280x1024	
10μ	19.7°	

NFOV (200mm)			
HFOV	640x512	1280x1024	
15μ	2.8°		
10μ	1.9°	3.8°	

Property	Value	
Optical	WFOV	NFOV
Focal Length	19mm	200mm
F/#	4.0	
Cold Stop to FPA Distance	19.4mm	
Cold Stop CA	Ø4.85mm	
Average Transmission (3.4-5.0μm)	94% (HD) / 93% (HD)	
Back Focal Length	25.1mm in air	
Minimum Focus Range	5m	50m
Nuc (by defocus)	Yes	
Mechanical		
Focus Mechanism	Motorized	
Focus Time (minimum range to ∞)	≤1 sec.	
Zoom Mechanism	Motorized	
Zoom Time (NFOV to WFOV)	≤7 sec. at -32°C; ≤5 sec. at T≥ 0°C (at max. speed)	
Weight	400gr	
Max. Dimensions	Ø65mm x 74.3mm	

\* Requires export license



Property	Value
<b>Electrical</b>	
Lens Control	Designated lens controller
Supply Voltage	12V
Current Consumption	< 0.5A average, 1.0A peak
Communication Protocol	RS422
<b>Environmental</b>	
Operating Temperature	-32°C to +75°C
Storage Temperature	-54°C to +85°C
Sealing	IP 67 front element only
<b>Configurations</b>	
680209-001	High Durability FPA 640x512 pixels 15μ pitch
680209-002	Low Reflection Hard Carbon FPA 640x512 pixels 15μ pitch**

\* NOTE: The ICD drawing provided here is primarily a representation and may not accurately reflect the product's actual dimensions and specifications. For precise integration specifications contact your local sales representative.

\*\* For detailed LRHC coating specifications see page 13