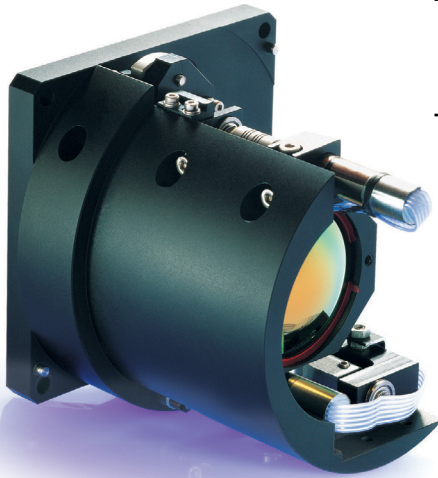


# SupIR 50/150mm f/4.0, Motorized Focus 65103\*



**HD**  
FORMAT

## WFOV(50mm)

HFOV	640x512	1280x1024
15μ	11.0°	
10μ	7.3°	14.6°

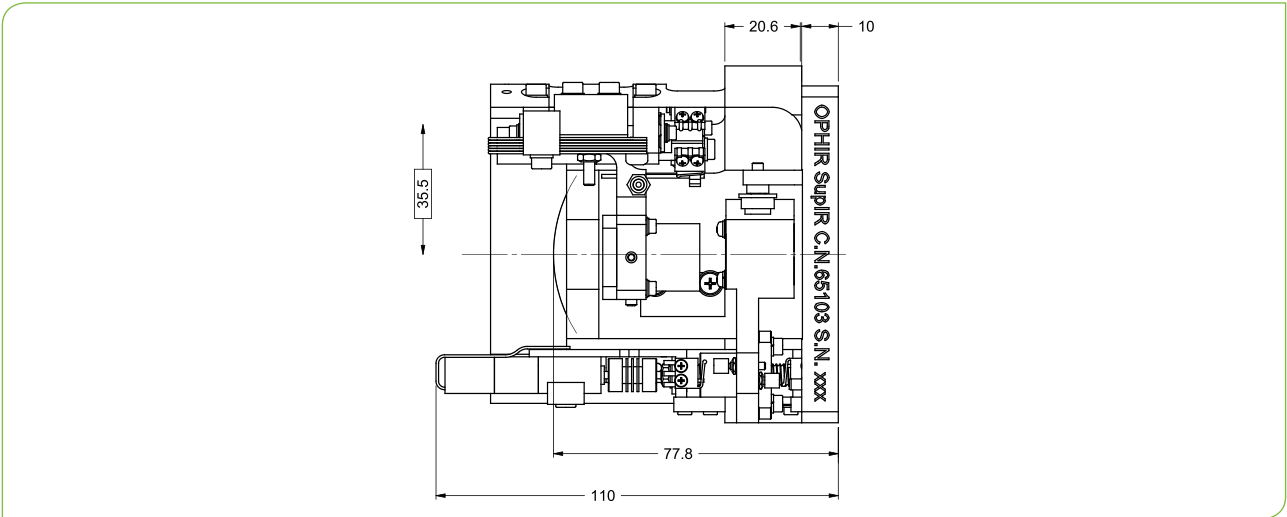
## NFOV(150mm)

HFOV	640x512	1280x1024
15μ	3.6°	
10μ	2.4°	4.8°

MWIR | Multiple FOV

Property	Value	
<b>Optical</b>	<b>WFOV</b>	<b>NFOV</b>
Focal Length	50mm	150mm
F/#	4	
Cold Stop to FPA Distance	19.4mm	
Average Transmission (3.4-5μm)	97% (HE)	
Back Focal Length	26.28mm in air	
<b>Mechanical</b>		
Focus Mechanism	Motorized	
Focus Range	5m to infinity	20m to infinity
Focus Switch Time	6 sec.	
FOV Mechanism	Motorized	
FOV Switch Time	1 sec.	
Weight	700gr	
Max. Dimensions	Length 113mm, Width 101mm, Height 98mm	

\* Requires export license



Property	Value
<b>Electrical</b>	
Focus Motor	3.5-6VDC, Encoder:5-15VDC
FOV Motor	3.5-6VDC, Encoder:5-15VDC
<b>Environmental</b>	
Operating Temperature	-32°C to +55°C
Storage Temperature	-40°C to +70°C
Sealing	Consult factory
<b>Configurations</b>	
65103	High Efficiency

\* NOTE: The ICD drawing provided here is primarily a representation and may not accurately reflect the product's actual dimensions and specifications. For precise integration specifications contact your local sales representative.