

# Pyroelectric Energy Sensors

2μJ to 100μJ

## Features

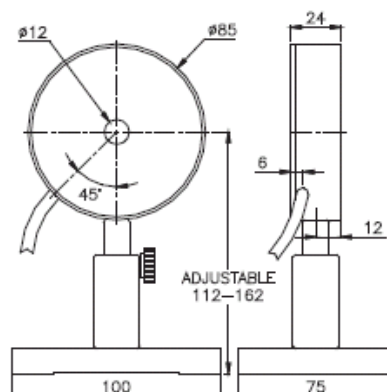
- φ12mm apertures
- Repetition rates up to 4,000Hz
- Sensitive sensors
- Pulse widths up to 500μs

PE10 / PE10BB



Model	PE10	PE10BB
Use	Sensitive	Flat spectral response
Aperture mm	φ12	φ12
Absorber Type	metallic	broadband
Spectral Range μm <sup>(a)</sup>	0.15 - 12	0.15 – 20
Surface Reflectivity % approx.	50	5
Calibration Accuracy +/-% <sup>(a)</sup>	3	3
Energy Scales	10mJ to 20μJ	10mJ to 100μJ
Lowest Measurable Energy μJ	2	10
Max Pulse Width μs	20	500
Maximum Pulse Rate pps	4000	150
Noise on Lowest Range μJ	0.1	2.5
Additional Error with Frequency %	±1.5% to 3KHz, ±3% to 4KHz	±1.5% to 150Hz
Damage Threshold J/cm <sup>2</sup>		
<100ns	0.1	0.3
1μs	0.2	0.3
300μs	3	1
Linearity with Energy for >10% of full scale	±2%	±2%
Maximum Average Power W	2	2
Maximum Average Power Density W/cm <sup>2</sup>	50	50
Fiber Adapters Available	ST, FC, SMA, SC	ST, FC, SMA, SC
Weight Kg	0.25	0.25
Version	V2	V2
Part Number	7Z02862	7Z02871
Notes: (a) Calibrated curve is checked and adjusted at the following wavelengths (μm)	0.193, 1.064	1.064
For other wavelengths in the curve there is additional calibration error as stated.	240 – 800nm add ±4%, 2-3μm add ±8%, 10.6μm add ±15%	0.2-3μm ±2%, 10.6μm ±5%

PE10 / PE10BB



Rev4/spc/01.01.11/eg |

Visit our website: [WWW.OPHIROPT.COM](http://WWW.OPHIROPT.COM)