

## USBI USB Interface

### Convert your Laptop or Desktop PC into an Ophir Sensor Power/Energy Meter

- From sensor to interface to PC - no power source needed
- Plug and play with most Ophir Sensors
- Record every energy pulse at up to 2000Hz
- Log Power and energy, average, statistics, histograms and more
- USBI with StarLab PC application software and LabVIEW driver



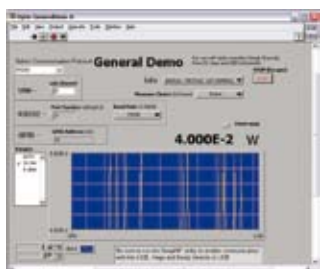
### Smart Sensor to USBI to PC

Ophir basic USBI interface for single channel turns your PC or laptop into a full fledged Ophir laser power/energy meter.

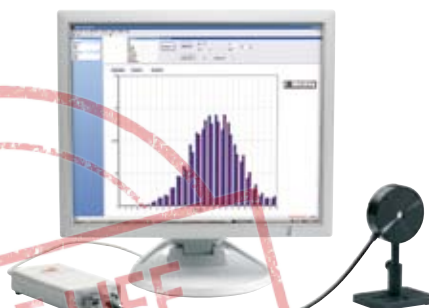
Just install the software, plug the Sensor into the interface box and the USB cable from the box to the PC USB port.

Using the USBI, you can connect several Sensors to the PC by using one box for each Sensor and if necessary, a USB hub.

The connection from each box to the PC is via one USB cable.



Lab VIEW



USBI operating with StarLab software

#### Specifications

##### Power Measurement

Power log period 5s to 500hr.  
Analog output Analog output 1V F.S.

##### Energy Measurement

Max real time data logging to PC 2000Hz<sup>(a)</sup>  
Trigger input and output N.A.

Timing Supports time stamp for each pulse - resolution 50ms

##### General

Number of sensors supported One sensor per unit. Can combine several units with software for display of up to 8 sensors on one PC

Compatible sensors Supports most Ophir pyroelectric, thermal and photodiode sensors

Power supply Powered from USB

Dimensions 155 x 90 x 34mm

Note (a) This is the data logging rate for every single point in turbo mode. Above that rate, the instrument will sample points but not log every single point.

#### Ordering Information

Item	Description	Ophir P/N
USBI	Module to operate one Ophir sensor from your PC USB port. Comes with software. Max repetition rate for every pulse ~2KHz. Powered from PC USB port.	7Z01200