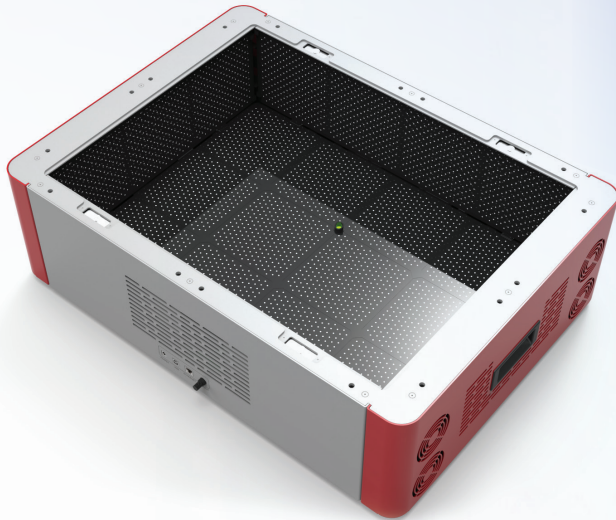


FluxGage™

Photometric System for LED Lighting Measurement



Specifications

Item	FluxGage	FluxGage 600/100LM*	FluxGage 1500*
Outer dimensions (mm)	769x563x223	769x563x223	1576x722x223
Maximal luminaire size (mm) ⁽¹⁾	640x480	640x480	1445x640
Total luminous flux range (Lm)	500-40,000	100-5,000	500-40,000
Weight (kg)	20Kg	20Kg	50Kg
General specifications			
Spectral range of spectrometer (nm)	400-800		
Measurement time (s) ⁽²⁾	2		
Operation temperature (°C)	20-35		
Power consumption (W)	36W		
Compliance	CE		
Interface	USB, Ethernet		
Operation voltage	12v (power adapter is supplied)		
Performance	Accuracy	Repeatability	
Total flux: ⁽³⁾ Absolute calibration Referenced to customers' laboratory	Accuracy ±6% ±2%	±1% ±1%	
Chromaticity accuracy [Duv] ⁽⁴⁾	±0.002	±0.0005	
CCT accuracy ⁽⁴⁾	±1.5% ±33°K @ 2200°K CCT ±85°K @ 5700°K CCT	±0.5%	
CRI accuracy ⁽⁴⁾	±1%	±0.5%	
Flicker accuracy	±1%	±0.5%	

(1) Refers to the area which emits light

(2) At the lowest flux

(3) For a DUT which has the same spectrum in all directions

(4) Measured at the fiber sensor

*For availability please contact Dr. Simon Rankel: simon.rankel@eu.ophiropt.com