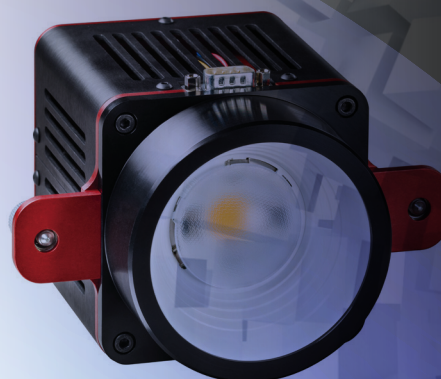


FGC100™

FluxGage Calibration Unit

The FGC100 calibration standard is a current and temperature stabilized LED source designed to calibrate the FluxGage system. The FGC100 lamp unit emits at 2pi geometry. The FGC100 includes a lamp unit and a controller unit. The FGC100 is calibrated at Ophir from a NIST traceable calibration standard.



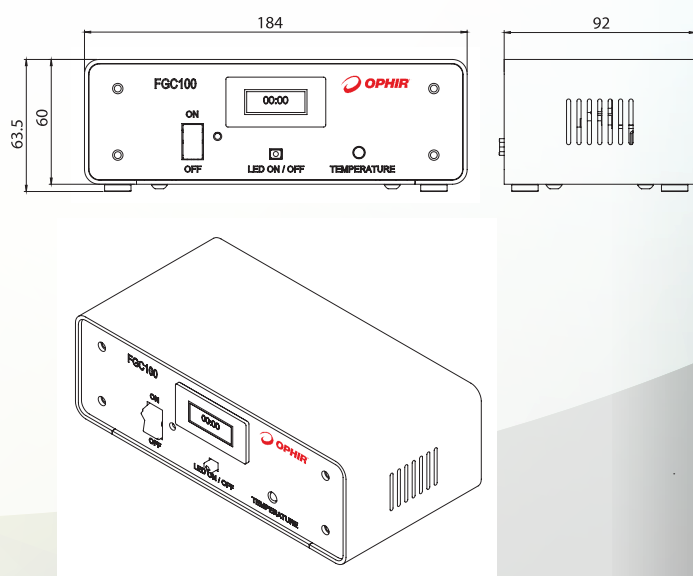
Advantages of LED calibration standard over tungsten standard

- Better spectral match with the device under test.
- Better angular distribution match.
- No excess infrared radiation (causes stray light in spectrometers).

Specifications

Parameter	Value
General	
Operation ambient temperature range [°C]	15-30
Stabilization time [minutes]	30
Power consumption [W]	30
LED Unit	
Dimensions (LxWxH) [mm]	94X154X163
Weight [Kg]	0.955
Spectral Range [nm]	390-800
Luminous Flux [lumens]	1000
Radiant Flux [W]	4
Working time before new calibration [Hours]	50
Flux Stability over working time	±1%
Control Box Unit	
Dimensions (LxWxH) [mm]	184X92X63.5
Weight [Kg]	0.535
Compliance	CE
Part Number	7Z17040

Control Box Unit



LED Unit

