

1.1.1.7 Accessories for Photodiode Sensors

Fiberoptic Adapters and Other Accessories

PD300 with F.O. Adapter Mounted

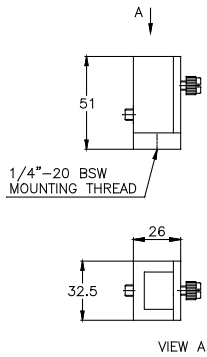


Accessories and Fiberoptic Adapters for PD300 series

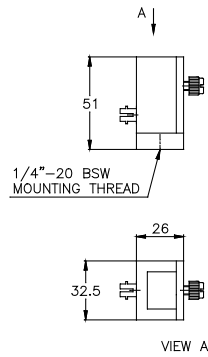
Accessory	Description	Part number
PD300-CDRH-7mm	Ø7mm aperture adapter for CDRH measurements for PD300	7Z02418
PD300-CDRH-3.5mm	Ø3.5mm aperture adapter for CDRH measurements for PD300	7Z08336

Fiber Adapters for Sensor Series	Adapters for mounting fibers to PD300 sensors as shown below	SC type	ST type	FC, FC / APC type	SMA type
PD300 Series		7Z08221	7Z02210	7Z02213	7Z02212

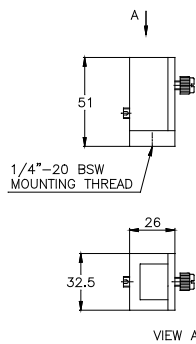
PD300-FO-SMA



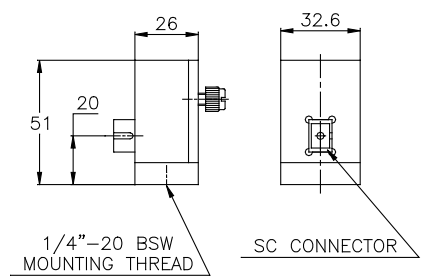
PD300-FO-ST



PD300-FO-FC



PD300-FO-SC



Accessories and Fiberoptic Adapters for PD300R series, PD300-IRG, 3A-IS, IS-1-2W and FPD series

SC fiber adapter



ST fiber adapter



FC fiber adapter



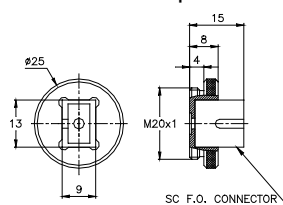
SMA fiber adapter



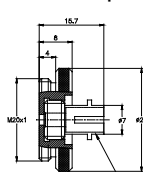
Accessory	Description	Part number
PD300R-CDRH-7mm	Ø7mm aperture adapter for CDRH measurements for PD300R	7Z08347

Fiber Adapters for Sensor Series	Fiber adapter mounting bracket (1 bracket fits all fiber adapters)	SC type	ST type	FC, FC / APC type	SMA type
FPD Series	1G02259 - not needed except for FPS-1	7Z08227	7Z08226	7Z08229	1G01236A
PD300R Series	1G02259	7Z08227	7Z08226	7Z08229	1G01236A
3A-IS / 3A-IS-IRG	7Z08213	7Z08227	7Z08226	7Z08229	1G01236A
IS-1-2W	7Z08331	7Z08227	7Z08226	7Z08229	1G01236A
PD300-IRG	not needed			7Z08216	7Z08222
Female SM1 to SM1 Adapter	For mounting PD300R series, PD300RM and FPS-1 sensors to SM1 optical components and systems				1G02260

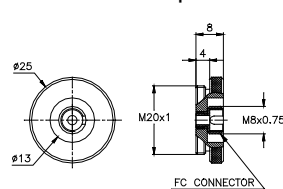
SC fiber adapter



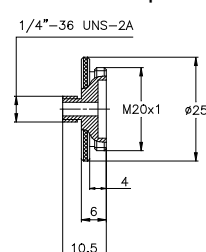
ST fiber adapter



FC fiber adapter



SMA fiber adapter



Female SM1 to SM1 Adapter

