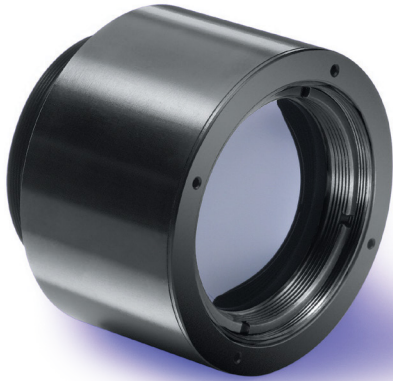
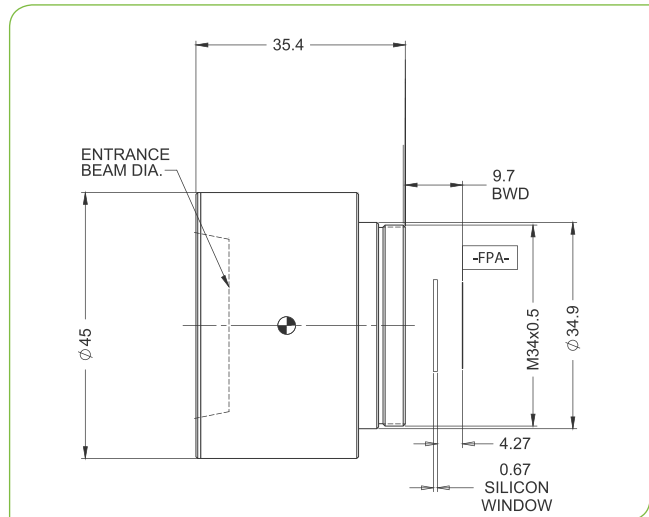


SupIR 35mm f/1.2, Fixed Athermalized 680111-006

TYPICAL ICD



**HD
FORMAT**



LWIR | 1-FOV

HFOV	160x120	320x240	384x288	640x480	1024x768
25μ	6.5°	13.0°	15.5°		
17μ	4.4°	8.9°	10.6°	17.6°	
12μ	3.1°	6.3°	7.5°	12.5°	19.7°

Property	Value
Optical	
Focal Length	35mm
F/#	1.2
Average Transmission (8-12μm)	97% (HD)
Back Focal Length	22.62mm in air
Mechanical	
Focus Mechanism	Fixed
Focus Range	1m to infinity
Depth of Field	50m to infinity
Weight	108gr
Max. Dimensions	Ø53.5mm x 45.2mm
Environmental	
Operating Temperature	-40°C to +80°C
Storage Temperature	-55°C to +85°C
Sealing	IP 67 front element only
Configurations	
680111-005	High Durability M34x0.5
680111-006	Hard Carbon M34x0.5