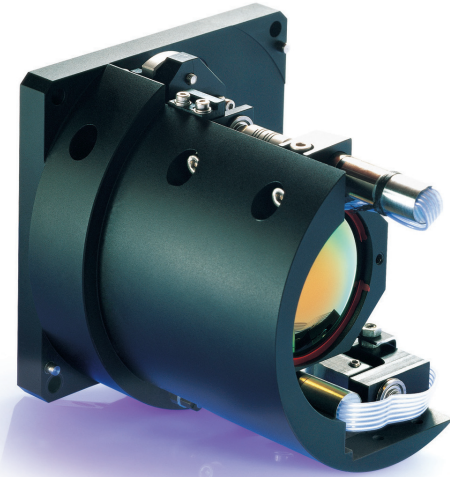


SupIR 50/150mm f/4.0, Motorized Continuous Zoom 65103*

MWIR | Multiple FOV



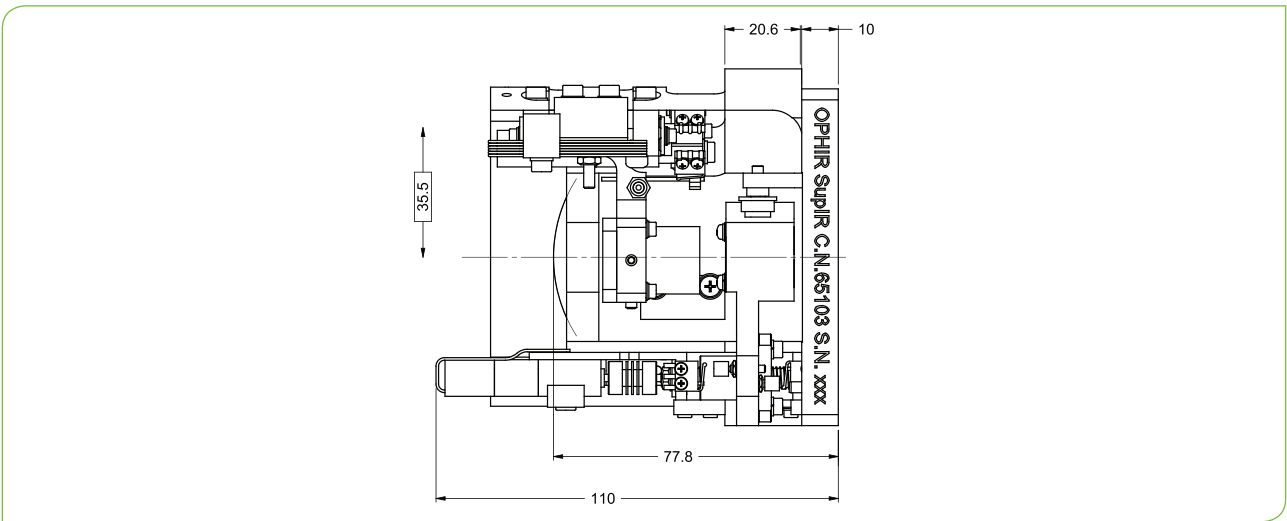
WFOV(50mm)

HFOV	320x240	480x384	640x512
30μ	11.0°		
20μ	7.3°	11.0°	14.6°
15μ	5.5°	8.2°	11.0°

NFOV(150mm)

HFOV	320x240	480x384	640x512
30μ	3.6°		
20μ	2.4°	3.6°	4.8°
15μ	1.8°	2.7°	3.6°

Property	Value	
	WFOV	NFOV
Optical		
Focal Length	50mm	150mm
F/#	4	
Cold Stop to FPA Distance	19.4mm	
Average Transmission (3.4-5μm)	97% (HE)	
Back Focal Length	26.28mm in air	
Mechanical		
Focus Mechanism	Motorized	
Focus Range	5m to infinity	20m to infinity
Focus Switch Time	6 sec.	
FOV Mechanism	Motorized	
FOV Switch Time	1 sec.	
Weight	700gr	
Max. Dimensions	Length 113mm, Width 101mm, Height 98mm	



MWIR | Multiple FOV

Property	Value
Electrical	
Focus Motor	3.5-6VDC, Encoder:5-15VDC
FOV Motor	3.5-6VDC, Encoder:5-15VDC
Environmental	
Operating Temperature	-32°C to +55°C
Storage Temperature	-40°C to +70°C
Sealing	Consult factory
Configurations	
65103	High Efficiency

* Requires export license