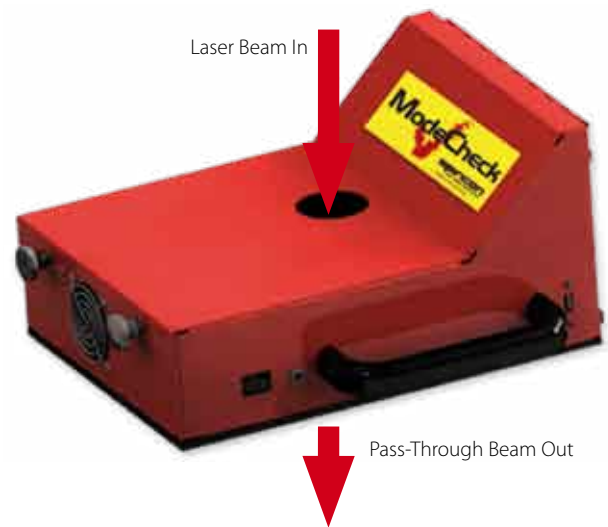


3.2.2.4 ModeCheck® - A New Method to Assure the Performance of High Power CO₂ Lasers

- Quality Cutting, Marking, Drilling & Ablating Require More Than Consistent Laser Power
- Instantaneously “see” and measure the beam - reduce set-up time between jobs
- Real-time “mode burns” - eliminate hazardous acrylic vapors
- Optimize laser efficiency - reduce cost per part
- Predict laser preventative maintenance - increase manufacturing efficiency
- Up to 5kW CO₂

ModeCheck is designed for the industrial parts manufacturer to reduce the time it takes to change over between different jobs. The user can quickly place the ModeCheck in front of the laser and see and measure, in real-time, the laser beam profile to confirm optimal laser performance. In addition, and when used periodically, the user can compare measurement changes from the same set-up and make necessary laser adjustments, keeping the laser output constant for the same job from day-to-day. Over time the user will be able to see and measure laser degradation to predict and advance schedule down-time needed for periodic maintenance.

ModeCheck eliminates operator exposure to acrylic mode burn hazards while improving product quality and manufacturing efficiency.



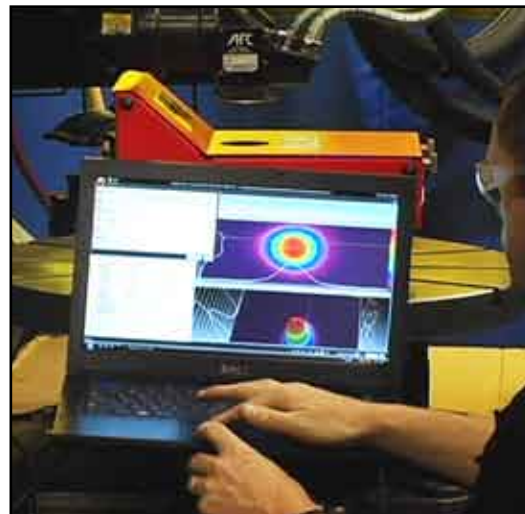
Measurements:

In addition to both 2D and 3D graphical image display and save, the following measurements are made from each image:

- Beam Widths and Diameters
- Beam Position Stability
- Peak Power Density
- Beam Centroid Location
- Elliptical Analysis with Major Axis Orientation

It's just this easy.

1. Remove Focusing optic
2. Locate the beam center with pointing beam or similar device
3. Place ModeCheck in beam center
4. Turn on Laser
5. Instantly see, measure and electronically store the beam characteristics

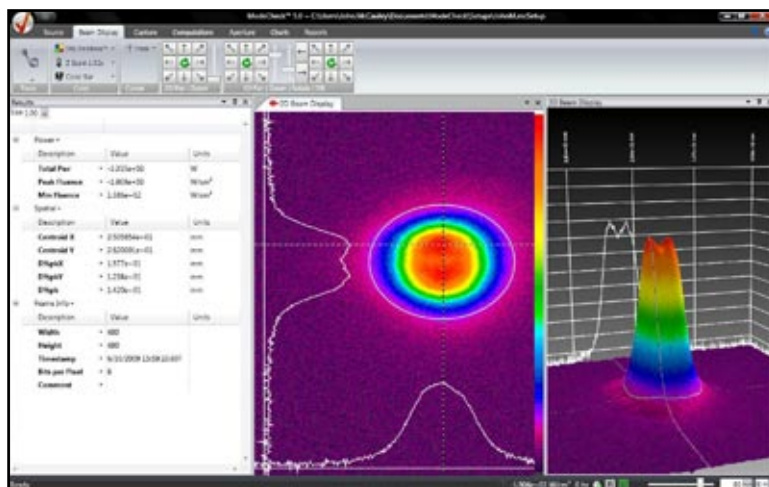


Optional Accessories:

One must manage the pass-through laser beam by collecting the beam using either a power meter or beam dump. We recommend using a power meter as the additional measurement information will assist in managing laser optimization. Note that any beam dump or power meter large enough to handle 5kW will require water cooling. There are holes on the bottom of ModeCheck for mounting the Power Meter Head or Beam Dump.

A PC with is required to run the ModeCheck imaging software. The camera is powered over the USB cable that connects the computer to ModeCheck.

A ruggedized storage/carrying case is highly recommended for safe and efficient handling.



ModeCheck makes instantaneous beam measurements along with graphically displaying both the 2D and 3D power density distribution

Specifications

Model	ModeCheck
Laser Input Power	500-5000 Watts
Input Clear Aperture	50mm (~2")
Beam Width	5mm - 30mm
Pick-off Percent	0.5, 1, 2, 4% sampling wands; user replaceable
Damage Threshold	27 - 36 W/cm ²
Camera	1/3" format CMOS, 640x480, 6um pixel, 8bit, CS-mount, USB2
Lens	25mm C-mount
Cooling	Built in Fan (water required for the optional beam dump or optional power meter sensor)
uV Light Source	LED array
Software	ModeCheck v5.0
Power Requirements	Input: 100-240 Vac, 50-60Hz, 1.5A Output: 12Vdc, 5.0A, w/power jack, UL listed and CE compliant universal power supply included Camera is powered over the USB port
Dimensions	13" x 6.7" x 9.5" 242mm x 330mm x 171mm Not including handle and cabling or any options
Weight	~8 lbs 3.6kg
(Beam Dump (optional	Water cooled and rated for 5kW total power
(Power Meter (optional	5000W-SH; up to 5kW total power 10KW-SH-V2; up to 10kW total power
Laptop Computer	Provided by user; Windows XP Pro, Vista-32 or Windows 7 is required
Compliance	Unit meets CE and RoHS requirements



The optional rugged case is recommended for safe storage in an industrial facility

Ordering Information

Item	Description	P/N
MODECHECK CO ₂ -5KW	ModeCheck, CO ₂ sampler for 10.6μm beams up to 5KW, beam width up to 30mm	SP90211
Beam Dump; 5kW	Beam dump for up to 5kW continuous, includes mounting bracket, requires continuous water flow.	SP90224
5000W-SH	Power sensor, measure CO ₂ power up to 5000W; water cooling needed.	7Z02119
Mounting Hardware, 5000W detector	Mounting hardware for 5kW power sensor. Required when ordering the 5000W-SH sensor	SP90212
10KW-SH-V2	Power sensor, measure CO ₂ power up to 10,000W; water cooling needed.	7Z02645
Mounting Hardware, 10,000W detector	Mounting hardware for 10KW power sensor. Required when ordering the 10KW-SH-V2 sensor	SP90213
ModeCheck storage/carrying case	Ruggedized ModeCheck storage/carrying case	SP90227